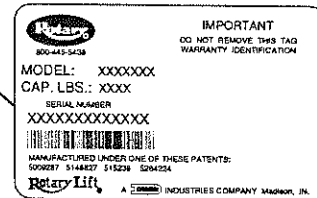
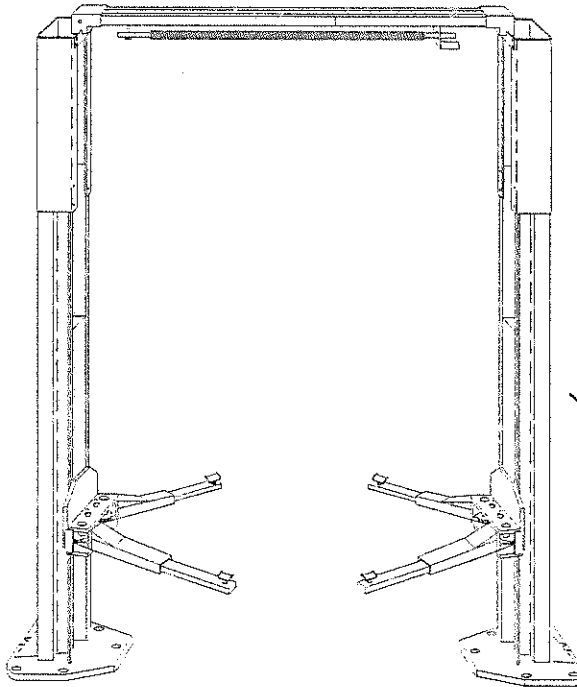




World Leader in Lift Systems

Model: SPO12

(For SPO12-10 Series Lifts)
Two Post Surface Mounted Lift



PARTS BREAKDOWN

ROTARY LIFT

<p>IMPORTANT: When ordering parts or requesting service always give exact model and power unit serial number. Model number is shown on nameplate attached to Power Unit column. Power unit serial number is located on side of power unit.</p>	<p>NOTES:</p> <p>SPO12 single phase = P791. SPO12 three phase = P792</p>
---	---

OWNERS RECORD
Complete information at right and keep in a safe place.

Date Installed _____ / _____ / _____

Installed In Bay # _____

Std. Pwr. Unit Serial # _____ Model # _____

3 ph. Pwr. Unit Serial # _____ Model # _____

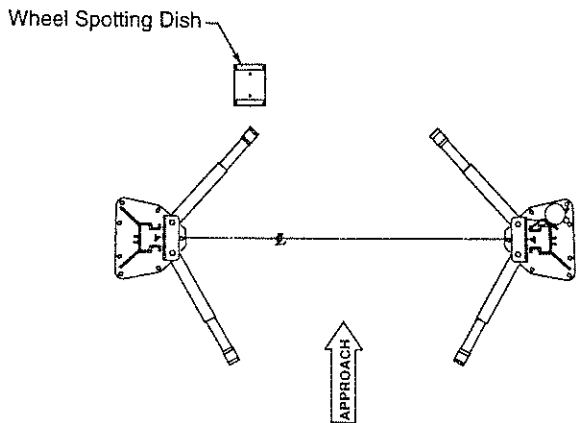
Lift Serial # _____

Model No# _____

NOTE: For Replacement Parts - See Your Nearest Rotary Parts Distributor

SPO12 PARTS LIST

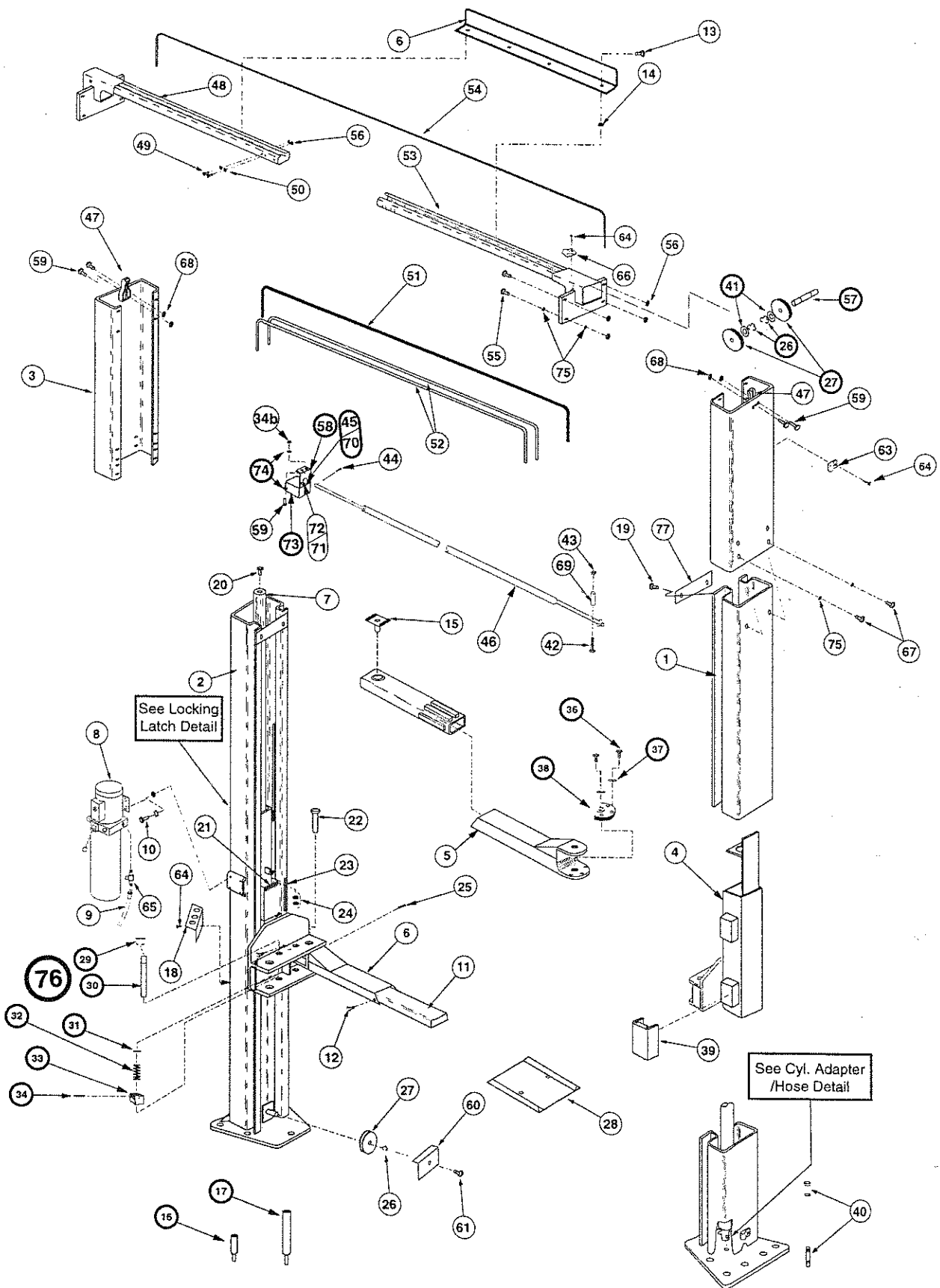
ITEM NO.	DESCRIPTION	SPO12 PART NO.	ITEM NO.	DESCRIPTION	SPO12 PART NO.
1	L.H. Column Weldment	N724	35	Number not used	N/A
2	R.H. Column Weldment	N725	36	Gear Bolts $\frac{3}{8}$ "-16NC x 1 $\frac{1}{2}$ " HHCS Grade 5	40200
3	Column Extension	N419	37	$\frac{3}{8}$ " Spring Washers	40818
4	Carriage Yoke Weldment	N810	38	Restraint Gear	FJ7750
5	Outer Arm	N25-1	39	Slider Block	FJ7360
6	Stiffener Angle	N417-3	40	$\frac{3}{4}$ " Concrete Anchor (14 Req'd)	FJ7380
7	Hydraulic Cylinder	N310	41	1 $\frac{1}{2}$ " O.D. x .760-.770" I.D. x .045" Thick Mach. Bushing	41388
8	Power Unit	See "Notes" On Front Cover			
9	Power Unit Hose	N314	42	$\frac{1}{4}$ "-20NC x 2" HHCS	40109
10	$\frac{5}{16}$ "-18NC x $\frac{3}{4}$ " Bolt,Ext Tooth LW&Nut	40224	43	$\frac{1}{4}$ " — 20NC Insert Lock Nut	41423
11	Inner Arm	N25-2	44	$\frac{1}{8}$ " x 1" Lg. Cotter Pin	41200
12	Stop Bolt	N219	45 @@	Limit Switch Assembly	N413 @@
13	$\frac{3}{8}$ " - 16NC x 1" Flanged HHCS	4 REQ'D	46	Switch Bar Assembly	N415
14	$\frac{3}{8}$ " - 16NC Flanged Locknut	4 REQ'D	47	Latch Cable Guide	N69
15	Adapter	FJ6141	48	R.H. Overhead Weldment	FJ7446-1
16	4" Adapter Extension	FJ6143	49	$\frac{3}{8}$ " — 16NC x $\frac{3}{4}$ " Long HHCS	40134
17	8" Adapter Extension	FJ6144	50	$\frac{3}{8}$ " Flat Washer	40820
18	Adapter Rack	FJ6145	51	Overhead Hose	N315
19	$\frac{3}{8}$ " - 16NC X $\frac{3}{4}$ " Flanged HHCS	4 REQ'D	52	Equalizer Cable Assembly	N39
20	Bleeder Screw MF (specify manufacturer)	2 REQ'D	53	L.H. Overhead Weldment	FJ7447-1
21	Carriage Bumper	FJ7391-2	54	Locking Latch Cable Assembly	FJ7595-1
22	Arm Pin	FJ7838	55	$\frac{3}{8}$ " — 16NC x 1" Flanged HHCS	40144
23	Approach Bumper (Door-18" Lg-2 Req'd)	FJ7391-1	56	$\frac{3}{8}$ " — 16NC Flanged Locknut	40664
24	$\frac{5}{8}$ " — 11NC Hex Lock Nut	40703	57	Sheave Shaft	FJ7444-8
25	$\frac{3}{16}$ " x 2" Long Cotter Pin	41250	58	Bracket	N413-5
26	Truarc #5304-75 Klipping for $\frac{3}{4}$ " Shaft	41411	59	$\frac{1}{4}$ "-20NC x 1" HHCS Grade 5	40108
27	Sheave	N417-1	60	Sheave Cover	N119-1
28	Wheel Spotting Dish Kit	FF729	61	$\frac{1}{4}$ " - 20NC x $\frac{3}{8}$ " Lg. Slotted PHMS	40063
29	Actuator Pin Handle	FJ7985-1	62	Number Not Used	N/A
30	Actuator Pin	N121-1	63	Hose Clip (6 Req'd)-Columns	FJ7499
31	Retaining Ring	N119-3	64	#12 Type B x $\frac{1}{2}$ " Lg. Slotted Hex Washer Head Tapping Screw (For Overhead & Col. Ext.)	40057
32	Arm Restraint Spring	FJ7656-2		$\frac{5}{16}$ " - 18NC x $\frac{3}{8}$ " Lg. Slotted PHMS (For Columns)	40227
33	120T Gear Block	FJ7749			
34	Spring Pin, $\frac{1}{4}$ " dia. x 1 $\frac{1}{2}$ " Lg. (stainless)	14427			
34b	$\frac{1}{4}$ "-20NC Zinc Hex Nut	40627	65	Branch Tee	FJ7668
			66	Hose Clip, Column, (4 Req'd)-Overhead	FJ7206
			67	$\frac{3}{8}$ "-16NC x $\frac{3}{4}$ " Lg. Flanged HHCS	40122
			68	$\frac{1}{4}$ " - 20NC Flanged Locknut	40641
			69	$\frac{3}{4}$ " Spacer	FJ7871
			70	3 Phase Limit Switch Assy. For Units Using Above 250V.	N414
			71	Single Phase Limit Switch (only)	P413-1
			72 ▲	Three Phase Limit Switch (only)	FJ7979-1
			73	4" x 4" Extension Ring	N/A
			74	$\frac{1}{4}$ " External Tooth Lockwasher	40779
			75	$\frac{3}{8}$ " External Tooth Lockwasher	40845
			76 **	Arm Restraint Kit (1 Arm)	FJ7888
			77	Tie Bar	N165-2



** Includes item No#'s
29, 30, 31, 32, 33, 34,
36, 37, & 38

@@ Includes item 58, 71, & 73

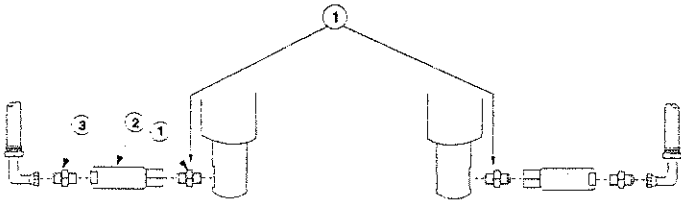
▲ For units using above 250V. 250V and lower use P413-1 switch.



For Extended Height Models Use Part Numbers Below As Cross Reference, All Other Parts Are Common

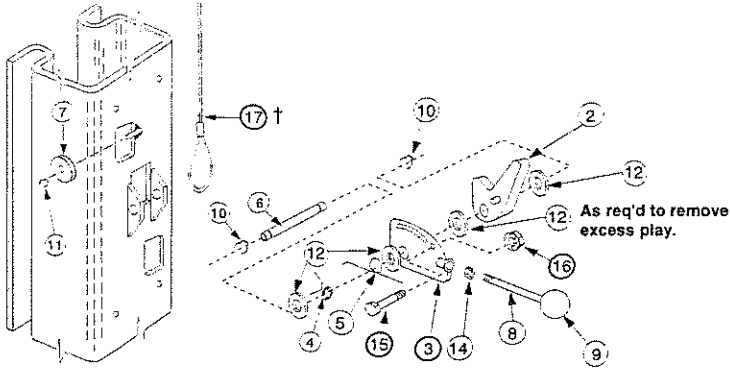
	#3-Column Extensions	#51-Overhead Hose	#52-Equalizer Cables	#54-Locking Latch Cable
SPO12 EH-1	N420	N316	N312	FJ7600
SPO12 EH-2	N421	N317	N313	FJ7600

CYLINDER ADAPTER / HOSE DETAIL



CYLINDER ADAPTER/HOSE DETAIL PARTS LIST

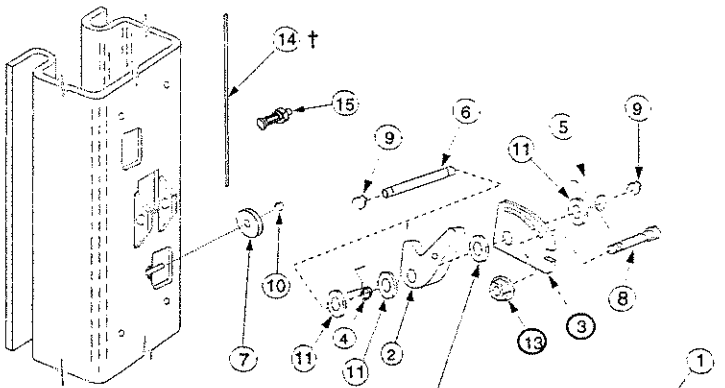
ITEM NO.	DESCRIPTION	PART NO.
1	Lenz 6 - 4 - APN <i>16095</i>	N/A
2	Fenner FC 1020 Flow Control	N/A
3	Lenz 3105L - 6 - 4 <i>16094</i>	N/A



RIGHT COLUMN

LOCKING LATCH DETAIL PARTS LIST

ITEM NO.	DESCRIPTION	PART NO.
1	Control Side Cover	FJ7452
2	Locking Latch Dog	N165-1
3	Control Plate	FJ7594-2
4	Spring	FJ7382-10
5	Spring	FJ7382-9
6	Latch Shaft	FJ7382-34
7	Locking Latch Sheave	FJ7322
8	Handle	FJ7382-18
9	Ball Handle	FC134-91
10	Truarc Klipring #5304-75 for $\frac{3}{4}$ " Shaft	41411
11	Truarc Klipring #5304-37 for $\frac{3}{8}$ " Shaft	41410
12	1 $\frac{1}{2}$ " O.D. x $\frac{3}{4}$ " I.D. x .045" Mach. Bush.	41388
13	$\frac{5}{16}$ " — 18NC x $\frac{3}{8}$ " Lg. Slotted Pan Hd. Screw	40227
14	$\frac{3}{8}$ " - 16NC Hex Jam Nut	40658
15	Shoulder Bolt, $\frac{5}{16}$ " x 1" - $\frac{1}{4}$ " 20 NC	40220
16	Flanged Locknut, $\frac{1}{4}$ " - 20 NC	41423
17	Latch Cable	FJ7595-1
†	For EH-1 & EH-2 Models	FJ7600



LEFT COLUMN

LOCKING LATCH DETAIL PARTS LIST

ITEM NO.	DESCRIPTION	PART NO.
1	Latch Cover	FJ7451
2	Locking Latch Dog	N165-1
3	Control Plate	FJ7382-5
4	Spring	FJ7382-10
5	Spring	FJ7382-9
6	Latch Shaft	FJ7382-34
7	Locking Latch Sheave	FJ7322
8	Shoulder Bolt $\frac{5}{16}$ " x 1" - $\frac{1}{4}$ " - 20NC	40220
9	Truarc Klipring #5304-75 for $\frac{3}{4}$ " Shaft	41411
10	Truarc Klipring #5304-37 for $\frac{3}{8}$ " Shaft	41410
11	1 $\frac{1}{2}$ " O.D. x $\frac{3}{4}$ " I.D. x .045" Mach. Bush.	41388
12	$\frac{5}{16}$ " — 18NC x $\frac{3}{8}$ " Lg. Slotted Pan Hd. Screw	40227
13	Flanged Locknut, $\frac{1}{4}$ " - 20 NC	41423
14	Latch Cable	FJ7595-1
15	Latch Cable Clamp (BURNDY)	KS-15
†	For EH-1 & EH-2 Models	FJ7600



World Headquarters:
ROTARY LIFT
A DOVER INDUSTRIES COMPANY
 2700 Lanier Drive
 Madison, Indiana 47250 USA
 Phone toll-free: 1-800-445-5438
 1-(812) 273-1622
 Fax toll-free: 1-800-822-6502
 1-(812) 273-6502
<http://www.rotary-lift.com>

For Canada:
DOVER CORPORATION CANADA, INC.
ROTARY LIFT DIVISION
 130 Bridgeland Avenue, Unit 210
 Toronto, Ontario M6A 1Z4
 1-(416) 256-4100
 Fax: 1-(416) 256-3924

For United Kingdom & Ireland:
ROTARY LIFT LIMITED
 Madison House
 2 Park Road
 Dartford, Kent DA1 1SL
 Tel: +44 (0) 1322-223323
 Fax: +44 (0) 1322-222454

